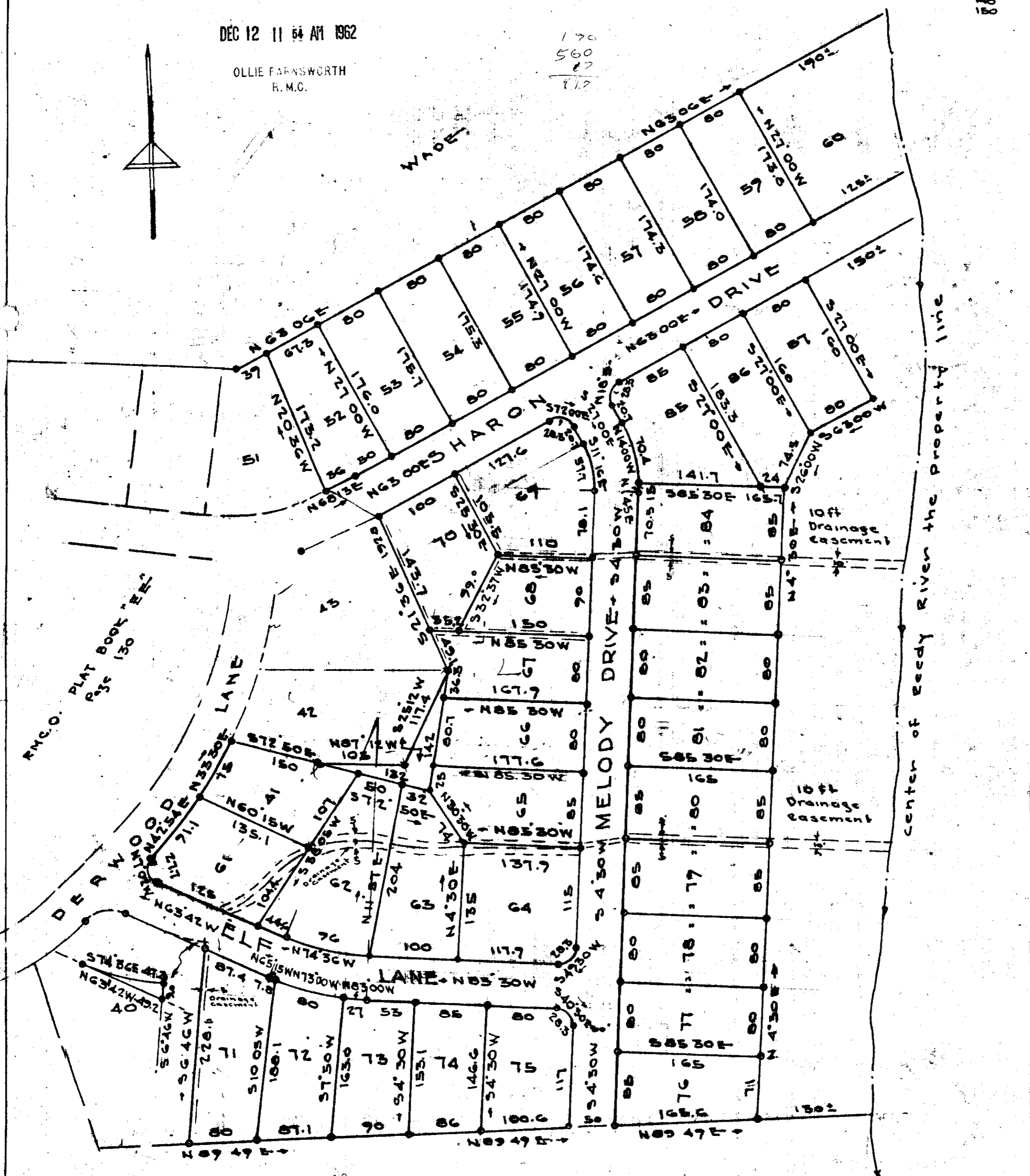
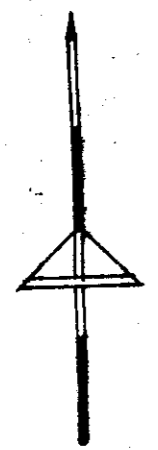


DEC 12 11 54 AM 1962

OLLIE FARNSWORTH
R.M.C.

170
560
87
172



R.M.C. PLAT BOOK "EM"
PAGE 130

10 ft
Drainage
Easement

10 ft
Drainage
Easement

Center of Eedy River the property line

DEVELOPED BY
HENRY HARDING
GREENVILLE, S.C.

310
197
190
165
120
138

EXTENSION OF SHARON PARK GREENVILLE CO. S.C.

Scale 1"=100' DEC 1962

C. C. JONES - CIVIL ENGINEER

DEC 12 1962

15142

C.C.C. - 71
322 8/05

15182 Filed This 13 day of Dec 1962
And Recorded in Vol. C.C.C. Page 71 at M.
Register Meane Conveyance Greenville County, S. C.